

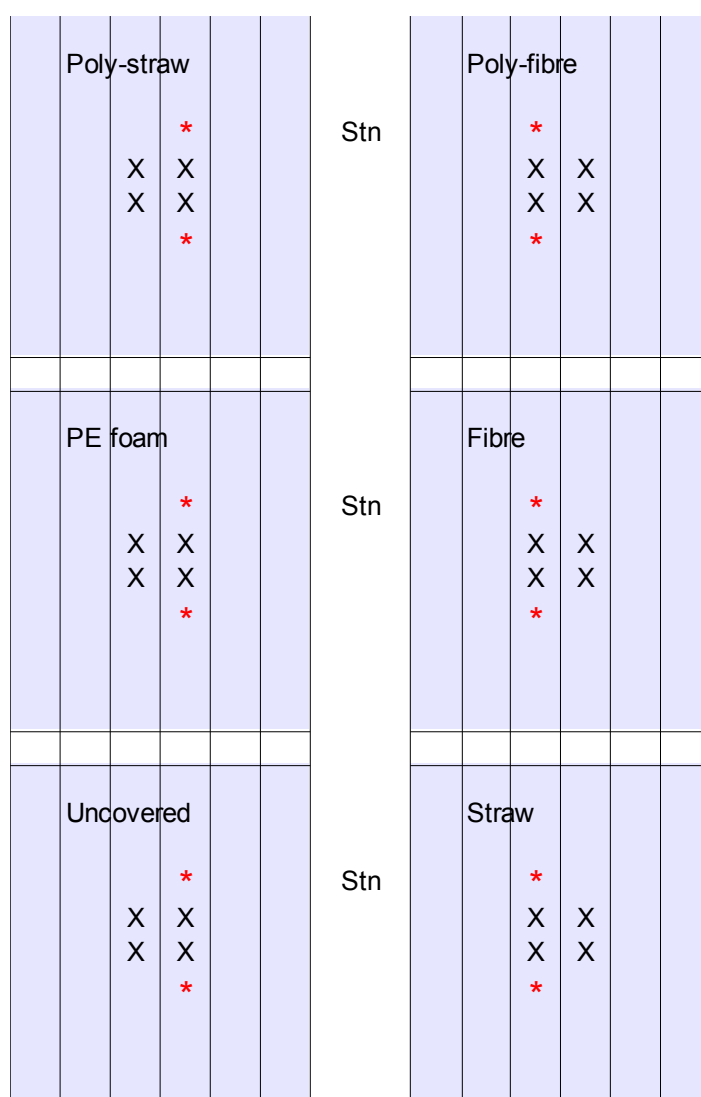
# FV 398b Carrot Field Storage Trials

Open Afternoon 28 Feb 2017  
Yorkshire Trial Site

Steve Roberts, [s.roberts@planthealth.co.uk](mailto:s.roberts@planthealth.co.uk)

Courtesy of Hobson's Carrots & Scampston Hall Estate

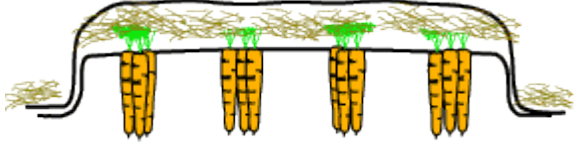
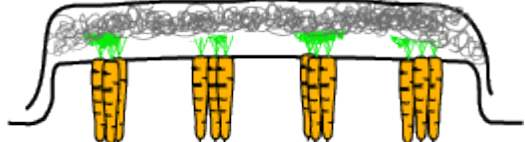
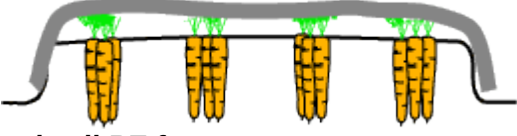
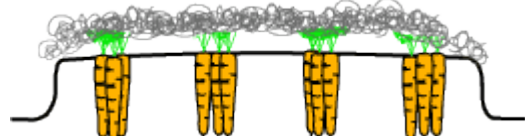
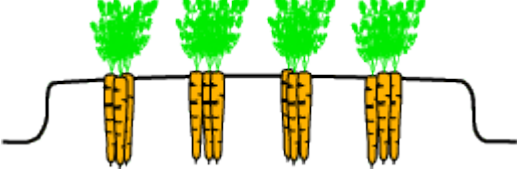
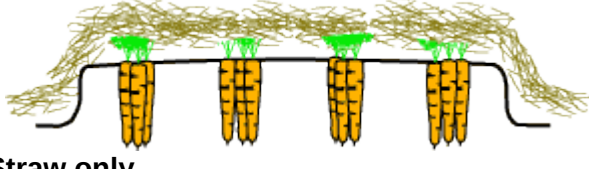
Plot Layout:



X = Harvest/Sampling areas; \* = Sensors; each plot is 6 beds wide (~11 m) by 10 m

**Important:**

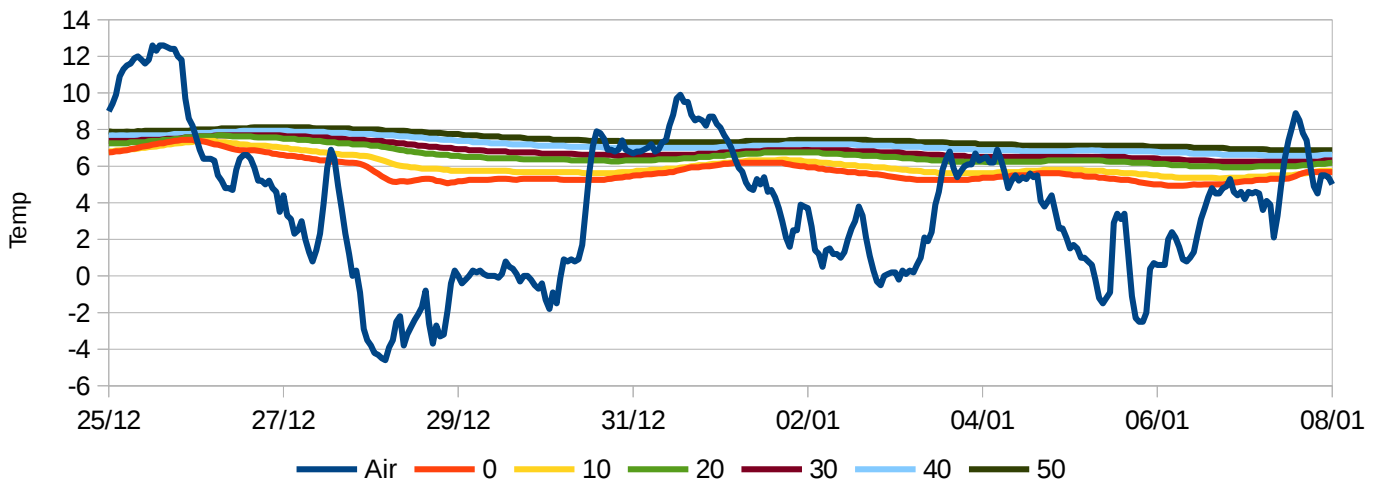
Buried cables! Follow the marked routes to/from and around the outside of the plots.

 <p><b>Reduced straw with poly cover</b></p>	 <p><b>Cellulose fibre with poly cover</b></p>
<p>Temp: 6.1 (4.3 – 9.9) FD: 0%</p>	<p>Temp: 5.9°C (3.1 – 9.6) FD: 0%</p>
 <p><b>Closed cell PE foam</b></p>	 <p><b>Cellulose fibre only</b></p>
<p>Temp: 4.5 (0.8 – 9.9) FD: 0%</p>	<p>Temp: 4.9 (1.2 – 9.3) FD: 0%</p>
 <p><b>Uncovered</b></p>	 <p><b>Straw only</b></p>
<p>Temp: 4.3 (-1.25 – 13.2) FD: 43%</p>	<p>Temp: 6.0 (3.4 – 10.5) FD: 0%</p>

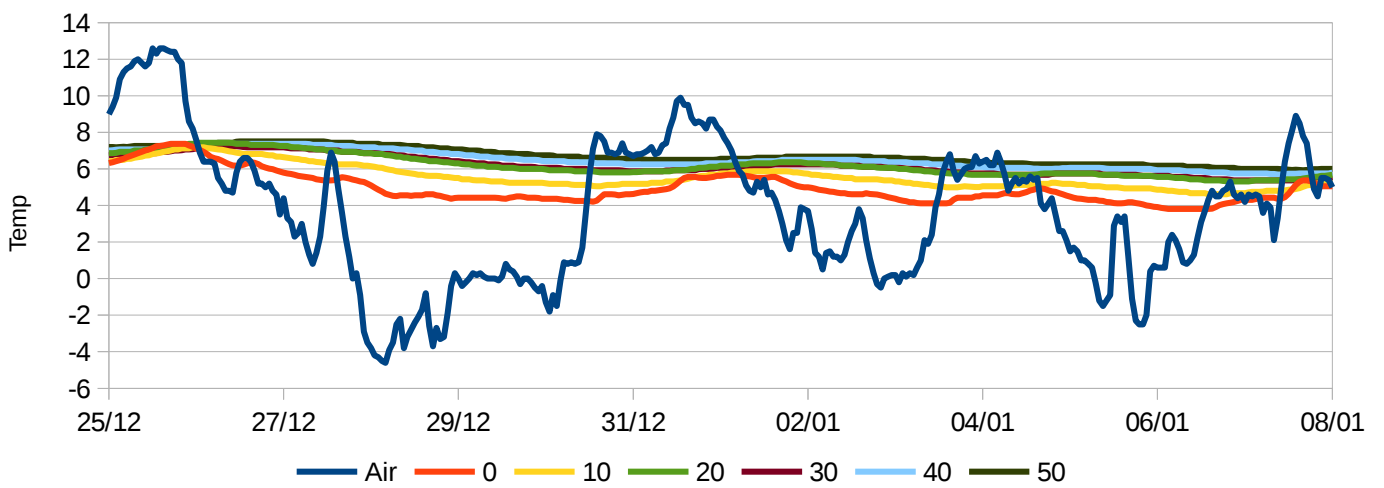
Temp: Average soil surface temp °C (Min – Max) (from 01/11/16 to 24/02/17)  
FD: Frost damage at first sampling (25/01/17)

Air temp: 4.7 (-5.2 – 14.8)

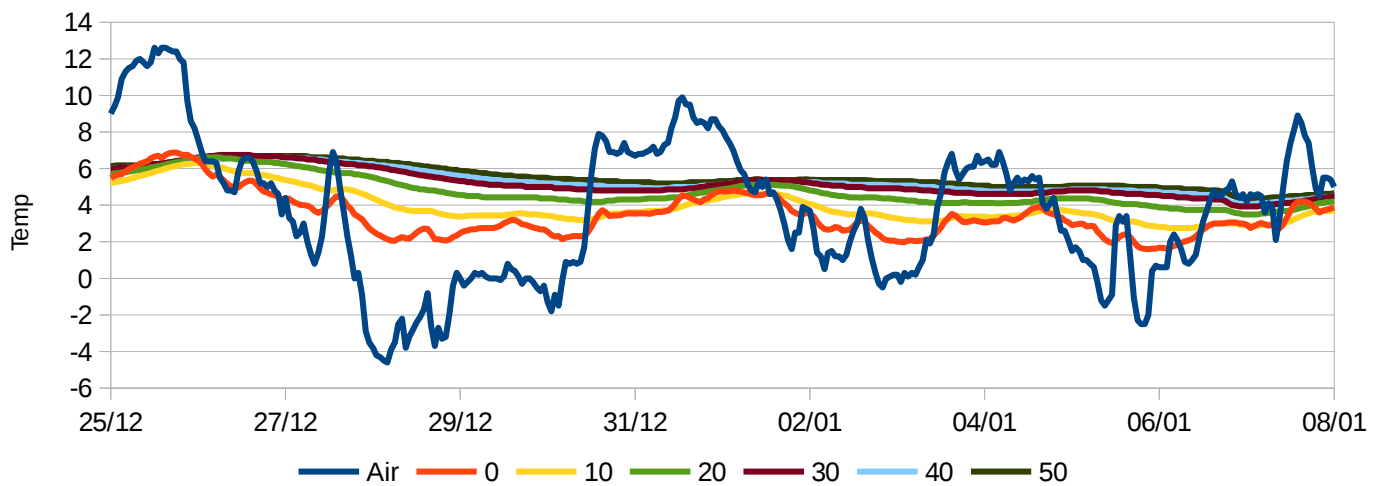
Plot 1: Poly over reduced straw



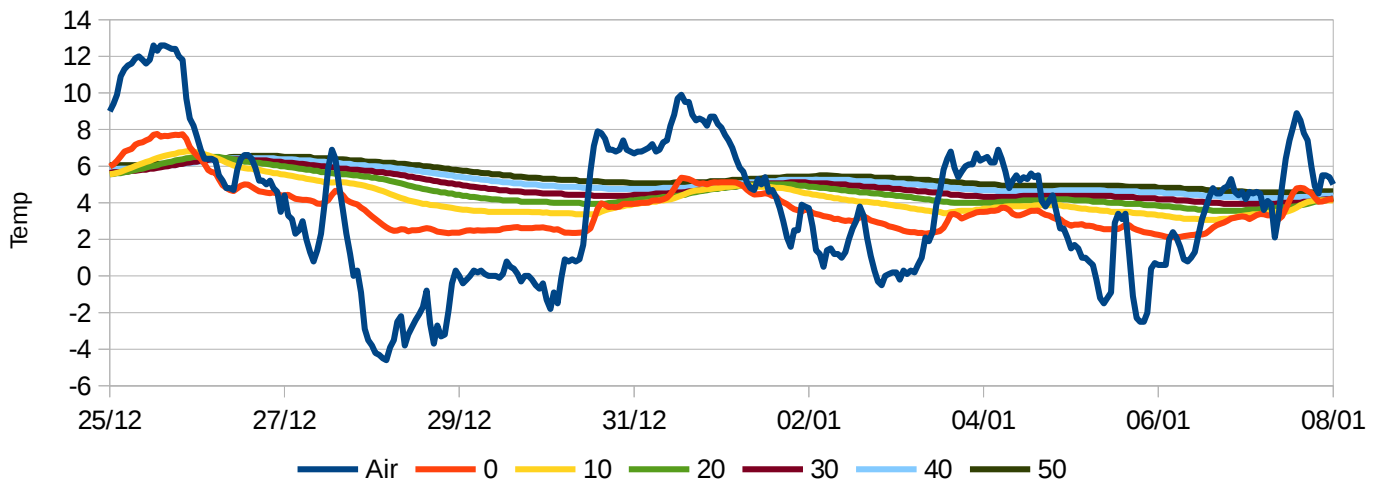
Plot 2: Poly over fibre



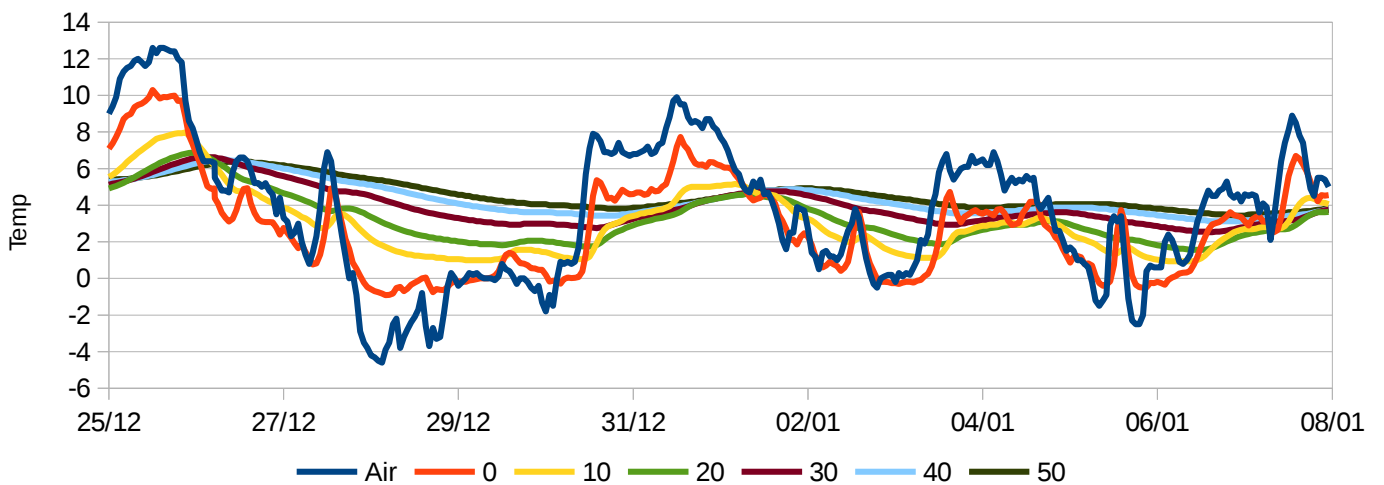
Plot 3: Foam



Plot 4: Fibre



Plot 5: Uncovered



Plot 6: Straw

